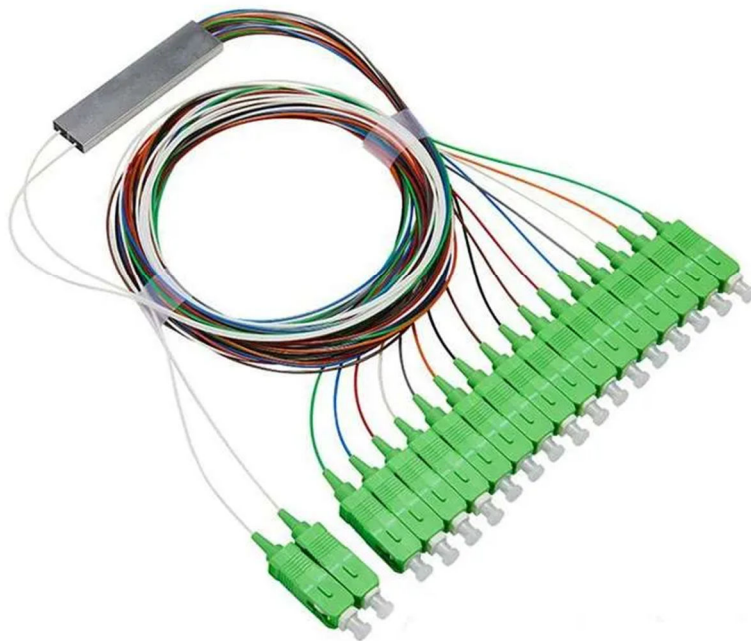


Optical Fiber Splitter

TECHNICAL DATA SHEET

**1 x 24 PLC Fiber Splitter, Mini Module,  
900 $\mu$ m, SC/APC, Single mode**



## **1 x 24 PLC Fiber Splitter, Mini Module, 900 $\mu$ m, SC/APC,** **Single mode**

### **Product Description**

The 1  $\times$  24 PLC Fiber Splitter (Mini Module) is a passive optical device based on Planar Lightwave Circuit (PLC) technology, designed to split one optical input signal into twenty-four output ports with stable and uniform optical power distribution.

It is packaged in a compact mini module housing with 900 $\mu$ m tight-buffered fiber and terminated with SC/APC connectors, making it suitable for FTTH access networks, optical distribution frames (ODF), and fiber distribution boxes (FDB). It delivers low insertion loss, excellent uniformity, and high reliability for long-term telecom use.

### **Features:**

- 1  $\times$  24 optical splitting ratio
- PLC (Planar Lightwave Circuit) technology
- Mini module compact design
- 900 $\mu$ m tight-buffered fiber construction
- SC/APC connectorized ends
- Low insertion loss and high reliability
- Excellent channel uniformity
- Wide operating wavelength range (1260–1650 nm)
- Plug-and-play installation
- RoHS compliant
- Telcordia GR-1209 / GR-1221 qualified

**Application:**

- FTTH (Fiber to the Home) networks
- Passive Optical Networks (GPON / EPON)
- Optical Distribution Frames (ODF)
- Fiber Distribution Boxes (FDB)
- CATV distribution systems
- Telecom access networks

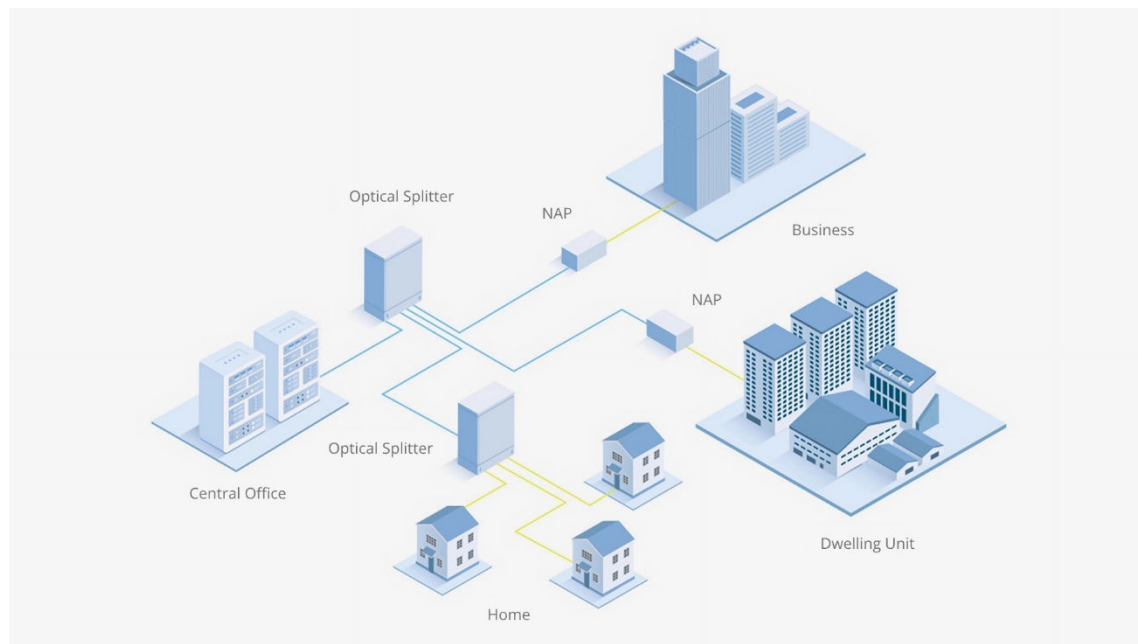
**Optical Specifications**

Parameter	Value
Configuration	1 × 24
Operating Wavelength	1260 ~ 1650 nm
Insertion Loss (Max)	≤ 15.2 dB
Uniformity	≤ 1.5 dB
Return Loss	≥ 60 dB (APC)
Polarization Dependent Loss (PDL)	≤ 0.4 dB
Directivity	≥ 55 dB
Wavelength Dependent Loss (WDL)	≤ 0.8 dB
Repeatability	≤ 0.1 dB
Stability	≤ 0.2 dB

## Mechanical Specifications

Item	Specification
Package Type	Mini Module
Fiber Type	Single Mode OS2
Fiber Diameter	900 $\mu$ m Tight Buffer
Connector Type	SC/APC
Housing Material	ABS / Metal Mini Module
Input/Output Length	0.5 m – 1.5 m (Customizable)
Operating Temperature	-40°C ~ +85°C

**Widely used in FTTX projects and data communication centers**



**The high-quality fiber optic splitter ensures stable transmission**

