

Optical Fiber Patch Cord

TECHNICAL DATA SHEET

**LSZH Fiber Optic Patch Cord SM
(G.657A1) 9/125 (LC-UPC/LC-APC)
Duplex (3.0mm)**

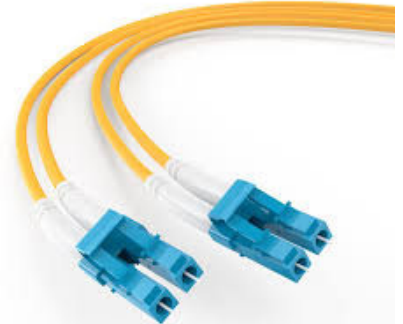


LSZH Fiber Optic Patch Cord SM (G.657A1) 9/125 (LC-UPC/LC-UPC) Duplex (3.0 mm)

Product Description:

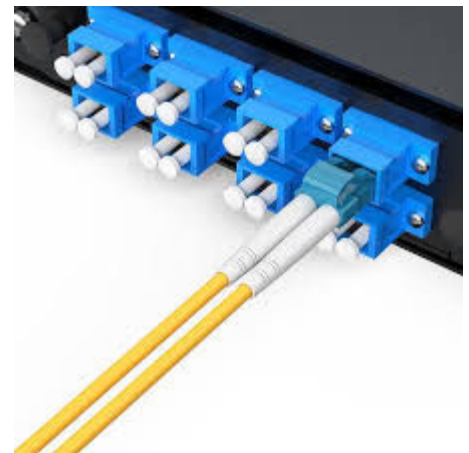
The LSZH Fiber Optic Patch Cord Single Mode G.657.A1 (9/125 μm) LC-UPC to LC-UPC Duplex 3.0 mm is a high-performance optical interconnect designed for high-density and high-speed fiber optic networks. It is engineered for stable, low-loss transmission in telecom systems, data centers, and FTTH applications.

The duplex structure supports simultaneous transmit and receive (Tx/Rx), while LC connectors provide compact size for high port density. UPC polishing ensures low insertion loss and stable optical performance.



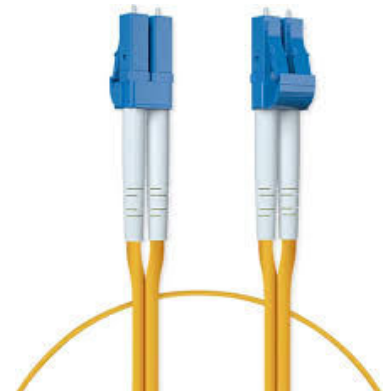
Features:

- LC small form factor for high-density applications
- Duplex design for simultaneous Tx/Rx transmission
- G.657.A1 bend-insensitive fiber for tight routing
- Low insertion loss and high return loss performance
- LSZH jacket for enhanced fire safety
- High reliability with long service life
- Excellent compatibility with modern optical equipment



Applications:

- FTTH (Fiber to the Home) and GPON networks
- Telecom infrastructure and backbone systems
- Optical test and measurement equipment
- Data centers and high-speed optical links
- Optical Distribution Frames (ODF)
- CATV fiber optic systems



Fiber Specifications:

Parameter	Details
Fiber Type	Single Mode (SM)
Standard	ITU-T G.657.A1 bend-insensitive fiber
Core Diameter	9 μm
Cladding Diameter	125 μm
Coating Diameter	245 μm (typical dual-layer UV coating)
Cable Structure	Duplex

Optical Properties:

Parameter	Value
Operating Wavelength	1310 nm / 1550 nm
Attenuation @1310 nm	≤ 0.35 dB/km
Attenuation @1550 nm	≤ 0.22 dB/km
Numerical Aperture	~ 0.13
Mode Field Diameter (MFD)	$\sim 8.6\text{--}9.2$ μm @1310 nm
Chromatic Dispersion	~ 3.5 ps/(nm·km) @1310 nm
Zero Dispersion Wavelength	~ 1310 nm

Environmental & Mechanical:

- Operating Temperature: -40°C to +85°C
- Storage Temperature: -45°C to +85°C
- Installation Environment: Indoor / Telecom / Data Center