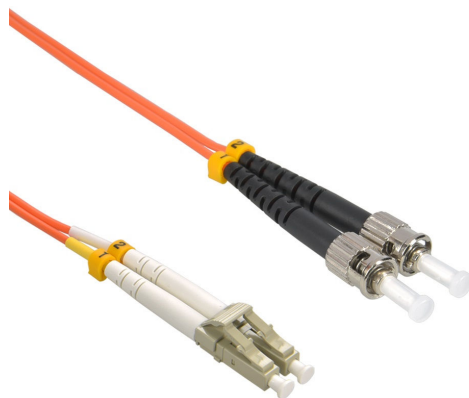


Optical Fiber Patch Cord

TECHNICAL DATA SHEET

LSZH Fiber Optic Patch Cord MM (OM2) 50/125 (LC-UPC/ST-UPC) Duplex 3.0 mm



LSZH Fiber Optic Patch Cord MM (OM2) 50/125 LC-UPC/ST-UPC Duplex 3.0 mm

Product Description:

The LSZH Fiber Optic Patch Cord Multimode OM2 (50/125 μm) LC-UPC to ST-UPC Duplex 3.0 mm is designed for reliable short- to medium-distance optical communication in enterprise networks and data centers.

It combines **LC connectors (compact, high-density interface)** with **ST connectors (secure bayonet twist-lock mechanism)**, making it suitable for hybrid environments that connect modern equipment with legacy fiber systems.



The duplex structure supports simultaneous transmit and receive (Tx/Rx), ensuring stable bidirectional communication. OM2 multimode fiber provides improved bandwidth and performance compared to OM1, enabling higher data rates over short distances.

Features:

- LC–ST hybrid connectivity for flexible integration
- Duplex design for simultaneous Tx/Rx transmission
- OM2 multimode fiber with improved bandwidth over OM1
- LSZH jacket for enhanced fire safety
- Low insertion loss and stable optical performance
- Durable 3.0 mm cable construction
- Easy installation and maintenance
- Suitable for mixed-generation network environments



Construction:

Parameter	Details
Fiber Type	Multimode (MM)
Fiber Standard	OM2 (50/125 μm)
Cable Structure	Duplex (Zipcord – 2 Fibers)
Cable Diameter	3.0 mm
Outer Jacket	LSZH (Low Smoke Zero Halogen)
Connector A	LC/UPC
Connector B	ST/UPC
Ferrule Material	Zirconia Ceramic
Strength Member	Aramid Yarn (Kevlar)

Applications:

- LAN (Local Area Networks)
- Ethernet switches and routers
- Structured cabling systems
- High-density patch panels
- Short to medium-distance optical links

Fiber Specifications:

Parameter	Value
Fiber Type	Multimode
Standard	OM2 (50/125 μm)
Operating Wavelength	850 nm / 1300 nm
Attenuation @850 nm	≤ 3.0 dB/km
Attenuation @1300 nm	≤ 1.0 dB/km
Bandwidth	500 MHz·km @850 nm
Mode Type	Graded-index multimode
Compatibility	Backward compatible with OM1 systems

Optical Performance:

Parameter	Value
Insertion Loss	≤ 0.3 dB
Return Loss	≥ 35 dB
Repeatability	≤ 0.1 dB
Durability	≥ 1000 mating cycles

Environmental Conditions:

- Operating Temperature: -20°C to +70°C
- Storage Temperature: -25°C to +70°C
- Indoor installation only