

Optical Fiber Patch Cord

TECHNICAL DATA SHEET

**LSZH Fiber Optic Patch Cord MM
(OM1) 50/125 (SC-UPC/SC-UPC)
Duplex 3.0 mm**



LSZH Fiber Optic Patch Cord MM (OM1) 50/125 (SC-UPC/SC-UPC) Duplex 3.0 mm

Product Description:

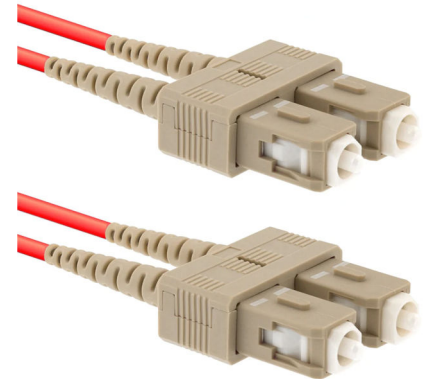
The LSZH Fiber Optic Patch Cord Multimode OM1 (50/125 μm) SC-UPC to SC-UPC Duplex 3.0 mm is designed for short-distance optical communication in enterprise networks and structured cabling systems.

It provides stable and reliable signal transmission using SC connectors with UPC polishing, ensuring low insertion loss and consistent performance. The duplex structure supports simultaneous transmit and receive (Tx/Rx), making it suitable for Ethernet and LAN applications.

OM1 multimode fiber is optimized for legacy and short-range optical links using LED-based transmission.

Features:

- SC-SC UPC connectivity for stable optical performance
- Duplex design for simultaneous Tx/Rx communication
- OM1 multimode fiber for short-distance applications
- LSZH jacket for enhanced fire safety
- Low insertion loss and reliable signal transmission
- Easy installation in structured cabling systems
- Durable 3.0 mm cable construction
- Cost-effective solution for legacy networks



Fiber Specifications:

Parameter	Value
Fiber Type	Multimode
Standard	OM1 (50/125 μm)
Operating Wavelength	850 nm / 1300 nm
Attenuation @850 nm	≤ 3.5 dB/km
Attenuation @1300 nm	≤ 1.0 dB/km
Bandwidth	200 MHz·km @850 nm
Fiber Type	Graded-index multimode
Compatibility	Legacy multimode systems

Applications:

- LAN (Local Area Networks)
- Data centers (short-distance links)
- Ethernet switches and routers
- Building backbone cabling
- Patch panels and network cabinets
- Enterprise structured cabling systems



Optical Performance:

Parameter	Value
Insertion Loss	≤ 0.3 dB
Return Loss	≥ 35 dB
Repeatability	≤ 0.1 dB
Durability	≥ 1000 mating cycles
Transmission Type	Short-distance high-speed links

Environmental Conditions:

- Operating Temperature: -20°C to $+70^{\circ}\text{C}$
- Storage Temperature: -25°C to $+70^{\circ}\text{C}$
- Indoor use only

Safety Features:

- LSZH jacket emits **low smoke and zero halogen gases** in fire conditions
- Suitable for indoor environments such as offices and data centers
- Flame-retardant and environmentally safer than PVC
- High resistance to bending, pulling, and mechanical stress