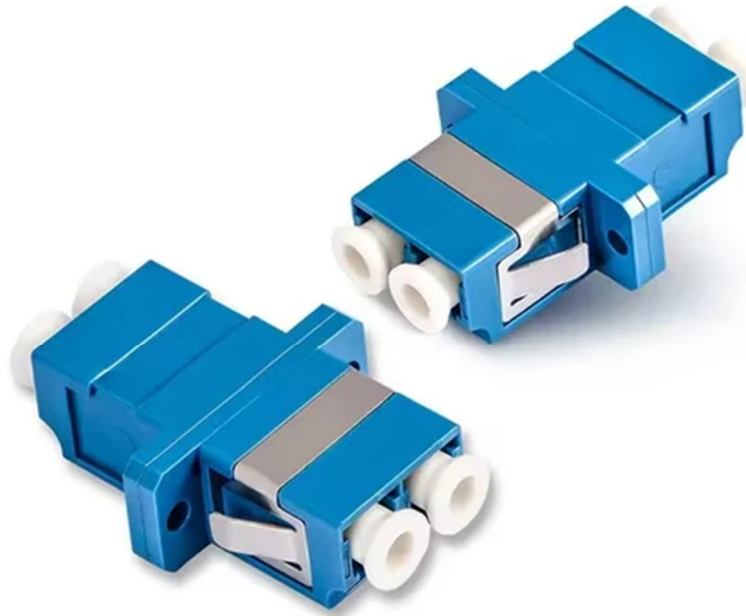


OPTICAL FIBER ADAPTER

TECHNICAL DATA SHEET

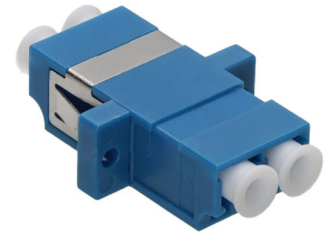
LC Adapter SM-DX-UPC 1.25 mm SMF (Blue Color)



LC Adapter SM-DX-UPC 1.25 mm SMF (Blue Color)

Product Description

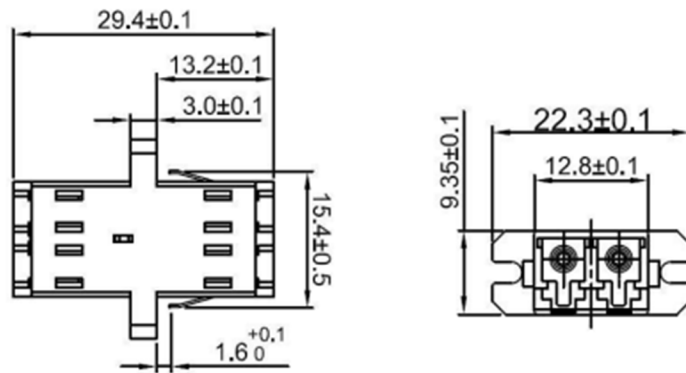
Fiber Light LC adapters in different variations. LC is the connector of choice for many network operators because of its compact size and reliability of connecting quality. There are flanged and flangeless versions available with many colors' options. Adapters meet the international standards IEC 61754-20/TIA 604-10-A and are naturally RoHS/REACH compliant. LC adapters include integrated stainless-steel clips for snap mounting on panels. LC style adapters are used in high density applications and feature a quick plug in installation.



Key Features

- LC to LC duplex connection
- Single Mode (OS1/OS2 – 9/125 μ m)
- Flange type for screw mounting
- SC footprint compatibility
- Low insertion loss (≤ 0.2 dB typical)
- High precision ceramic sleeve (zirconia)
- Good repeatability and interchangeability
- Dust caps for protection
- Snap-in or screw installation options

Basic Construction



Note: All units of measurement in millimeter

Applications

- Fiber patch panels
- ODF (Optical Distribution Frame)
- FTTH / FTTX networks
- Data centers & LAN
- Telecom networks
- Test and measurement equipment

Benefits

- Low insertion loss ensures high signal quality
- Compact LC design supports high-density installations
- Flanged body provides secure and stable mounting
- Easy plug-and-play installation (no special tools required)
- High precision ceramic sleeve for accurate fiber alignment
- Reliable performance over repeated mating cycles
- Duplex design keeps transmit and receive fibers organized
- Reduces cable congestion in patch panels and racks
- Compatible with standard LC single mode connectors (OS1/OS2)
- Durable construction for long-term use



Mechanical Characteristics

- Compact design for high-density panels
- Stainless steel clips or flange fixing
- One-piece body for improved stability

Technical Specifications

Parameter	Specification
Connector Type	LC Duplex
Fiber Mode	Single Mode (SM)
Sleeve Material	Zirconia Ceramic
Insertion Loss	≤ 0.2 dB
Return Loss	≥ 50 dB (UPC), ≥ 60 dB (APC typical)
Durability	≤ 0.2 dB change after 1000 matings
Mounting Type	Flanged (screw mount)
Housing Material	Plastic or metal
Operating Temperature	-40°C to +85°C
Alignment Sleeve	Ceramic (high precision)