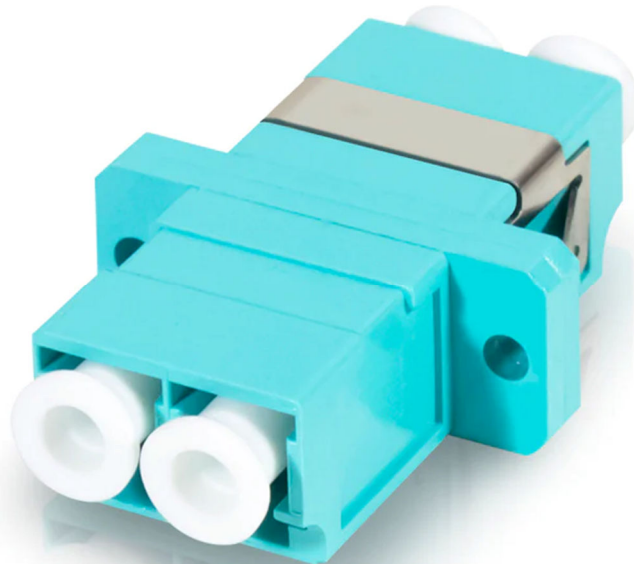


OPTICAL FIBER ADAPTER

TECHNICAL DATA SHEET

**LC Adapter MM-OM3-DX-UPC 1.25 mm MMF (Aqua
Color)**



LC Adapter MM-OM3-DX-UPC 1.25 mm MMF (Aqua Color)

Product Description

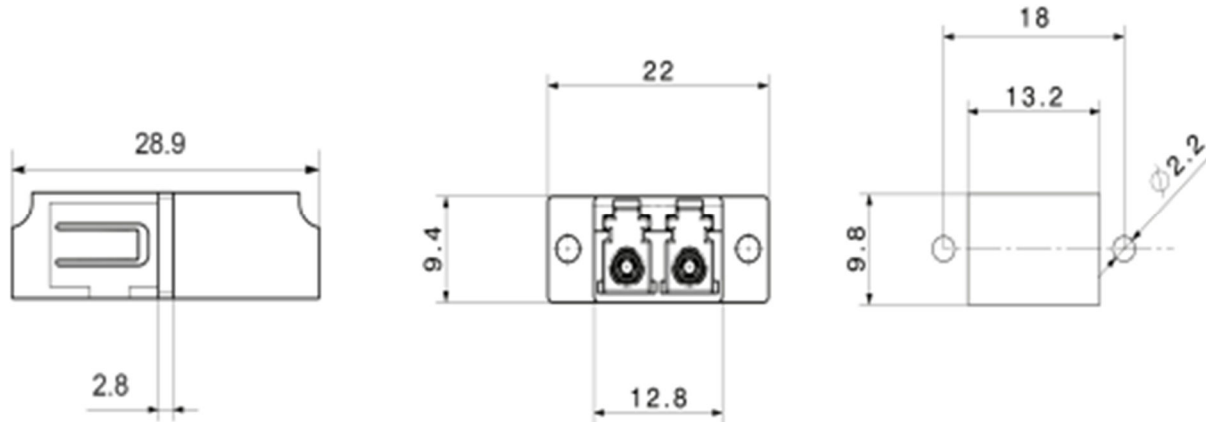
Fiber Light LC adapters in different variations. LC is the connector of choice for many network operators because of its compact size and reliability of connecting quality. There are flanged and flangeless versions available with many colors' options. Adapters meet the international standards IEC 61754-20/TIA 604-10-A and are naturally RoHS/REACH compliant. LC adapters include integrated stainless-steel clips for snap mounting on panels. LC style adapters are used in high density applications and feature a quick plug in installation.



Key Features

- LC Duplex (DX) interface
- UPC polish (Ultra Physical Contact)
- Multimode OM3 fiber (50/125 μm)
- 1.25 mm ceramic ferrule for high alignment precision
- Aqua color for OM3 identification (fiberstore.com)
- Flanged or flangeless mounting options
- Integrated stainless steel clips for snap-in panel mounting
- Compliant with IEC 61754-20 / TIA/EIA-604-10 standards
- RoHS and REACH compliant materials

Basic Construction



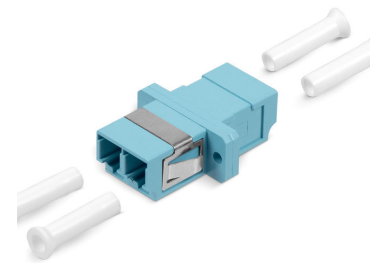
Note: All units of measurement in millimeter

Applications

- High-speed multimode fiber networks (10G/40G/100G Ethernet)
- Data centers and enterprise LAN
- Fiber patch panels and optical distribution frames (ODF)
- FTTA (Fiber-to-the-Access) and campus networks

Benefits

- Low insertion loss ensures reliable signal transmission (≤ 0.2 dB typical)
- High-density design saves space in patch panels and racks
- Quick plug-in installation for fast deployment
- Durable ceramic sleeve provides consistent alignment over many mating cycles
- Color-coded (aqua) prevents connector mismatch
- Ideal for data centers, LANs, and enterprise networks
- Supports high-speed multimode applications (10G, 40G, 100G Ethernet)



Technical Specifications

Parameter	Specification
Connector Type	LC Duplex (DX)
Fiber Type	Multimode OM3 (50/125 μm)
Ferrule Size	1.25 mm
Polish Type	UPC (Ultra Physical Contact)
Insertion Loss	≤ 0.2 dB typical, ≤ 0.3 dB max
Return Loss	≥ 50 dB
Alignment Sleeve	Ceramic (zirconia)
Mating Durability	≥ 1000 cycles
Operating Temperature	-40°C to +85°C
Color	Aqua (OM3 identification)
Compliance Standards	IEC 61754-20, TIA/EIA-604-10-A
RoHS / REACH	Yes

Environmental Specifications

- Storage Temperature: -40°C to +85°C
- Humidity: up to 95% RH
- Temperature Cycling: -40°C to +75°C, 40 cycles
- Damp Heat Resistance: 40°C, 93% RH, 96 hours
- Vibration Resistance: 10–55 Hz
- Retention Force: 2.0 – 5.9 N
- Flammability: UL94 V-0